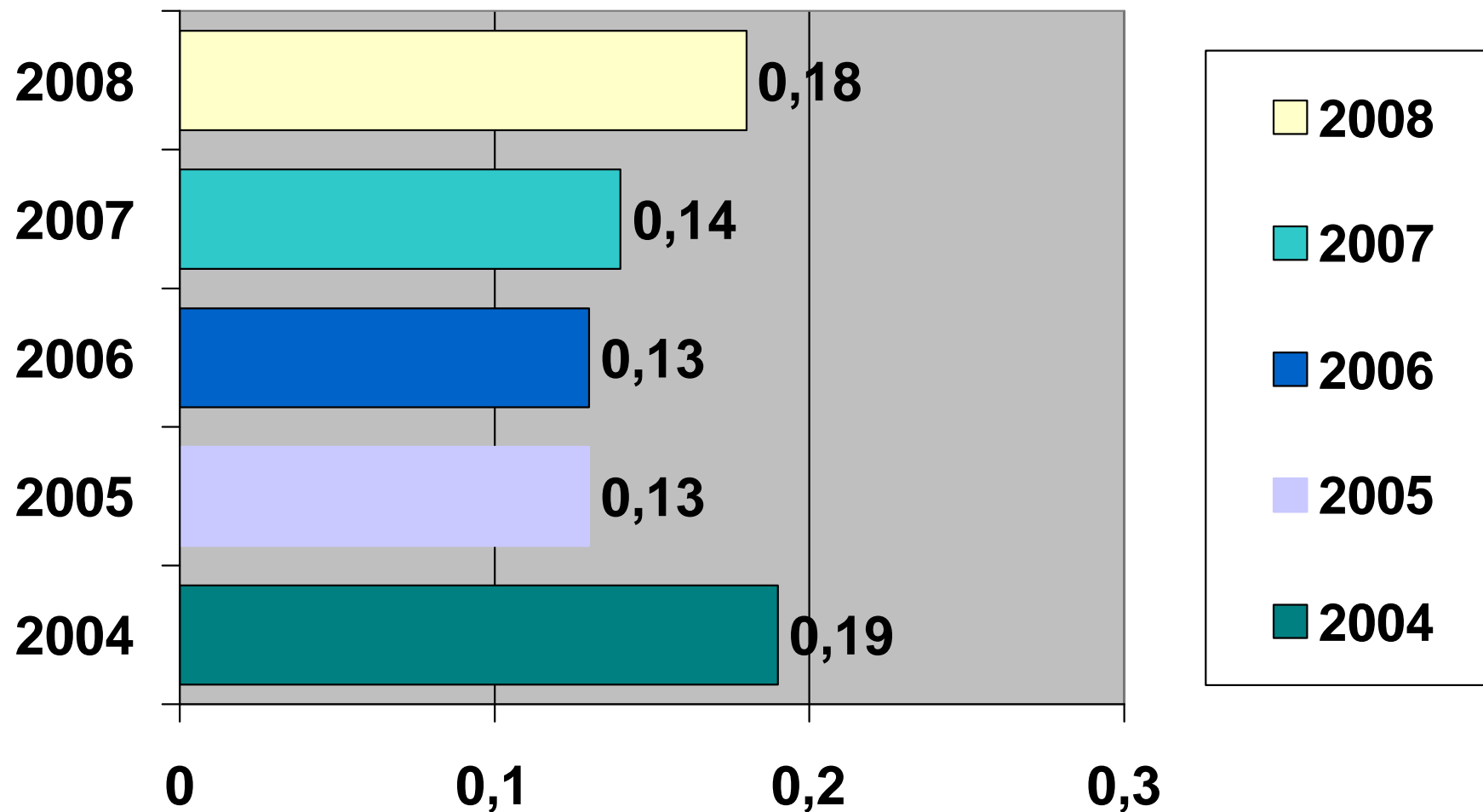


**1. Date generale pentru perioada 2004 – 2008/**  
**General overview between 2004 - 2008**

| <b>Nr. Crt.</b> | <b>Date generale/General data</b>   | <b>2004</b>         | <b>2005</b>         | <b>2006</b>         | <b>2007</b>         | <b>2008</b>       |
|-----------------|---|---------------------|---------------------|---------------------|---------------------|-------------------|
| 1.              | <b>Cinematografe în funcțiune/<br/>Number of active cinemas</b>                 | <b>155</b>          | <b>85</b>           | <b>73</b>           | <b>72</b>           | <b>75</b>         |
| 2.              | <b>Locuri /Seats</b>  | <b>70 496</b>       | <b>50 220</b>       | <b>44643</b>        | <b>43 057</b>       | <b>46 782</b>     |
| 3.              | <b>Spectatori /Admissions</b>   | <b>4 002 349</b>    | <b>2 829 563</b>    | <b>2 776 516</b>    | <b>2 928 050</b>    | <b>3 797 586</b>  |
| 4.              | <b>Încasări totale (RON)/<br/>Gross box office (RON)</b>                        | <b>24 872 000,1</b> | <b>24 423 454,0</b> | <b>28 279 665,0</b> | <b>34 381 413,0</b> | <b>53 114 230</b> |
| 5.              | <b>Frecvența pe locuitor/ Average<br/>admissions per inhabitant</b>             | <b>0,19</b>         | <b>0,13</b>         | <b>0,13</b>         | <b>0,14</b>         | <b>0,18</b>       |
| 6.              | <b>Preț mediu bilet – lei/<br/>Average ticket price – national<br/>currency</b> | <b>6,21</b>         | <b>8,60</b>         | <b>10,19</b>        | <b>11,74</b>        | <b>13,99</b>      |

**FRECVENTA PE LOCUITOR LA FILM/  
AVERAGE ADMISSIONS PER INHABITANT  
2004-2008**



**PRINCIPALELE SOCIETĂȚI DE EXPLOATARE A CINEMATOGRAFELOR /  
MAJOR EXHIBITION COMPANIES  
ANUL / YEAR 2008**

| <b>Principalele societati de<br/>exploatare a<br/>cinematografelor/<br/>Major exhibition companies</b> | <b>Cinematografe în<br/>funcțiune/ Number of<br/>active cinemas</b> | <b>Ecrane/<br/>Screens</b> | <b>Spectatori/<br/>Admissions</b> | <b>Incasari<br/>( RON )/<br/>Gross box office<br/>( RON)</b> |
|--|---|----------------------------|-----------------------------------|--|
| <b>HOLLYWOOD MULTIPLEX<br/>OPERATIONS</b>  | <b>3</b>  | <b>16</b>                  | <b>1 327 819</b>                  | <b>19 735 925</b>  |
| <b>MOVIEPLEX CINEMA</b>  | <b>1</b>  | <b>11</b>                  | <b>887 469</b>                    | <b>17 465 681</b>  |
| <b>CINEMA CITY ROMANIA</b>   | <b>3</b>  | <b>22</b>                  | <b>597 007</b>                    | <b>7 813 583</b>   |
| <b>R.A.D.E.F. ROMANIAFILM</b>  | <b>41</b>   | <b>43</b>                  | <b>462 612</b>                    | <b>3 010 388</b>   |
| <b>CITY CINEMA MANAGEMENT</b>  | <b>2</b>  | <b>8</b>                   | <b>234 216</b>                    | <b>2 517 247</b>   |
| <b>CHICAGO TOUR</b>  | <b>4</b>  | <b>4</b>                   | <b>76 712</b>                     | <b>456 837</b>   |
| <b>U.C.I.N. STUDIO BUCURESTI</b>   | <b>1</b>  | <b>1</b>                   | <b>57 060</b>                     | <b>390 115</b>   |
| <b>QUALITY CINEMA BUCURESTI</b>  | <b>7</b>  | <b>9</b>                   | <b>52 253</b>                     | <b>176 254</b>   |
| <b>LIGHT CINEMA BUCURESTI</b>  | <b>1</b>  | <b>7</b>                   | <b>47 389</b>                     | <b>939 216</b>   |
| <b>GO MULTIPLEX BRASOV</b>   | <b>1</b>  | <b>3</b>                   | <b>30 327</b>                     | <b>431 023</b>   |
| <b>AM&amp;PM LEASURE SERV.PROD.</b>  | <b>5</b>  | <b>5</b>                   | <b>6 704</b>                      | <b>45 242</b>  |

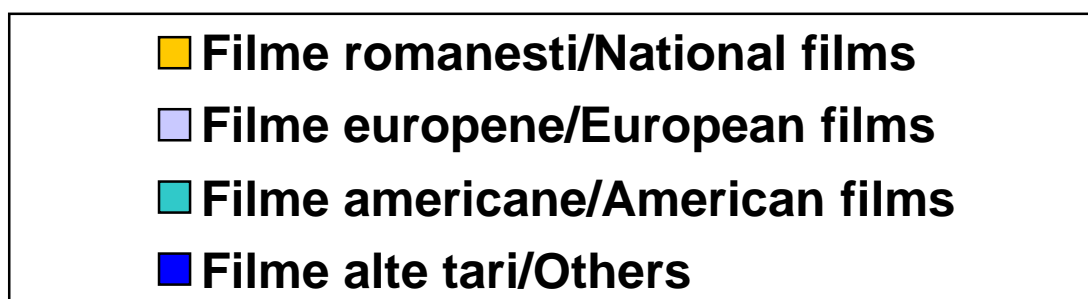
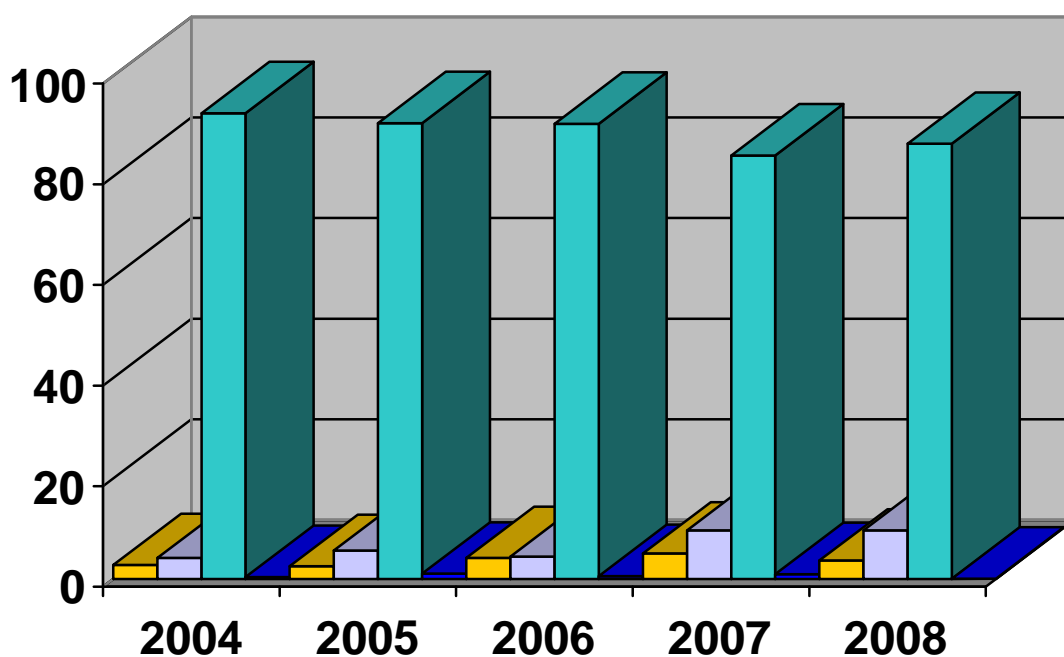
|                                |           |            |                  |                   |
|--------------------------------|-----------|------------|------------------|-------------------|
| <b>PROVIZUAL SRL RM.VALCEA</b> | <b>1</b>  | <b>1</b>   | <b>6 287</b>     | <b>46 479</b>     |
| <b>BLISTEX TIGLINA GALATI</b>  | <b>1</b>  | <b>1</b>   | <b>4 611</b>     | <b>24 208</b>     |
| <b>DMB MUSIC RECORDS</b>       | <b>2</b>  | <b>2</b>   | <b>2 827</b>     | <b>20 571</b>     |
| <b>ALTI EXPLOATANTI</b>        | <b>2</b>  | <b>3</b>   | <b>4 293</b>     | <b>41 461</b>     |
| <b>TOTAL</b>                   | <b>75</b> | <b>136</b> | <b>3 797 586</b> | <b>53 114 230</b> |

**2. Statistică generală cu privire la rețeaua cinematografică**  
**/General statistics regarding the exhibition**  
**ANUL / YEAR 2008**

|  |                   |
|--|-------------------|
| <b>Număr cinematografe în funcțiune/<br/><i>Number of active cinemas</i></b>                               | <b>75</b>         |
| <b>Număr ecrane/<br/><i>Number of screens</i></b>  | <b>136</b>        |
| <b>Număr locuri/<br/><i>Number of seats</i></b>  | <b>46 782</b>     |
| <b>Număr locuri per ecran/<br/><i>Number of seats per screen</i></b>                                       | <b>344</b>        |
| <b>Număr cinematografe cu 2, 3 sau mai multe ecrane/<br/><i>Number of multiscreens and multiplexes</i></b> | <b>14</b>         |
| <b>Număr cinematografe de artă / EURIMAGES/<br/><i>Number of art cinemas and EURIMAGES</i></b>             | <b>13</b>         |
| <b>Număr spectacole/<br/><i>Number of screenings</i></b>   | <b>127 893</b>    |
| <b>Număr spectatori/<br/><i>Admissions</i></b>   | <b>3 797 586</b>  |
| <b>Frecvența pe locuitor/<br/><i>Average admissions per inhabitant</i></b>                                 | <b>0,18</b>       |
| <b>Spectatori / spectacol-<br/><i>Admissions / screening</i></b>   | <b>30</b>         |
| <b>Încasări – RON/<br/><i>Gross box office – in RON</i></b>  | <b>53 114 230</b> |
| <b>Preț mediu bilet lei/<br/><i>Average ticket price (national curency)</i></b>                            | <b>13,99</b>      |

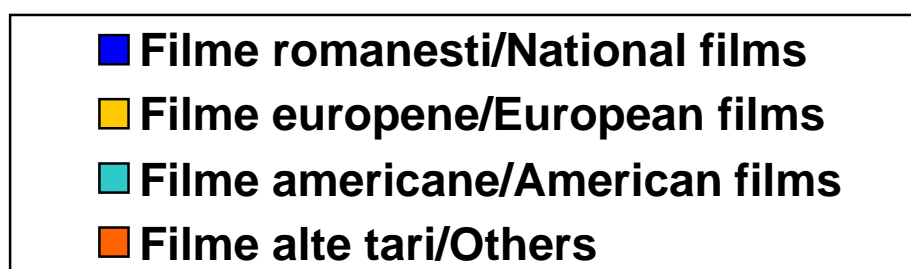
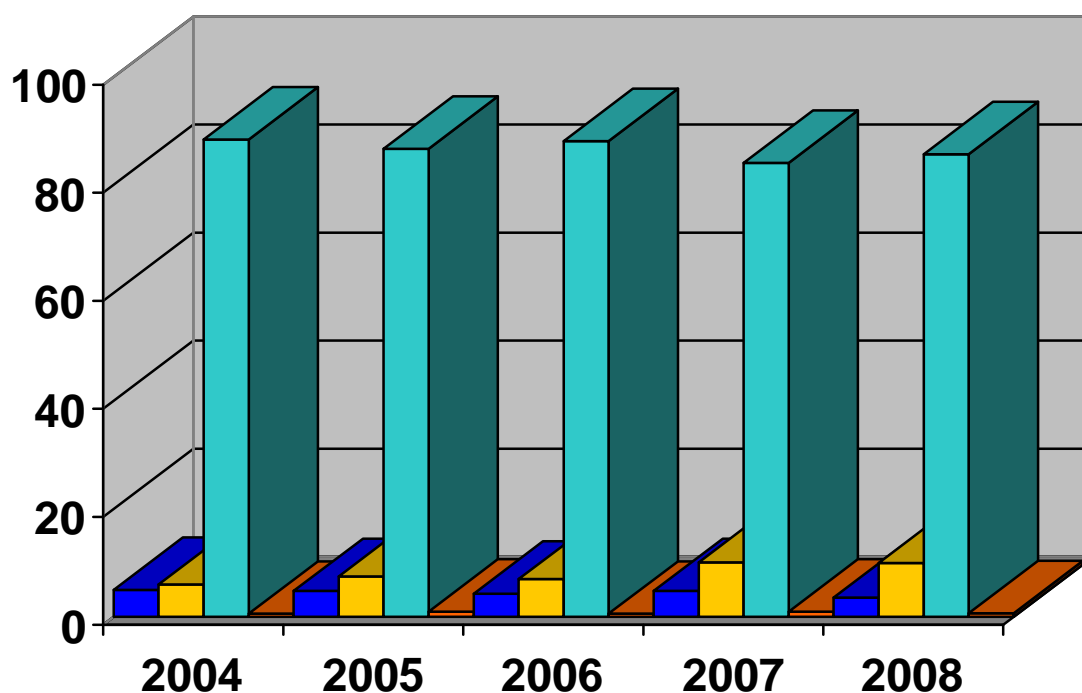
**3. Număr de spectatori realizat cu filmele în premieră  
după țara de origine / Admissions according to the origin  
of first time release feature films  
2004-2008**

| Țara de<br>origine/<br><i>Film origin</i> | 2004<br>%         | 2005<br>%         | 2006<br>%         | 2007<br>%         | 2008              |
|---|-------------------|-------------------|-------------------|-------------------|-------------------|
| Românești/<br><i>National films</i>       | 97 943<br>2,8     | 63 793<br>2,6     | 107 511<br>4,3    | 134 829<br>5,1    | 131 919<br>3,7    |
| Europene/<br><i>European<br/>films</i>    | 151 952<br>4,2    | 141 751<br>5,7    | 112 209<br>4,5    | 256 187<br>9,7    | 345 483<br>9,7    |
| Americane/<br><i>American<br/>films</i>   | 3 312 462<br>92,6 | 2 258 782<br>90,6 | 2 262 417<br>90,5 | 2 230 983<br>84,2 | 3 077 339<br>86,5 |
| Alte țări/<br><i>Others</i>               | 14 389<br>0,4     | 27 593<br>1,1     | 16 770<br>0,6     | 26 789<br>1,0     | 4 292<br>0,1      |
| <b>Total</b>                              | <b>3 576 746</b>  | <b>2 491 919</b>  | <b>2 498 907</b>  | <b>2 648 788</b>  | <b>3 559 033</b>  |



**4. Total număr spectatori / Admissions according to the origin of all released feature films 2004-2008**

| Țara de origine/<br><i>Film origin</i>      | 2004<br>%                | 2005<br>%                | 2006<br>%                | 2007<br>%                | 2008                     |
|---|--------------------------|--------------------------|--------------------------|--------------------------|--------------------------|
| <b>Românești/<br/><i>National films</i></b> | <b>197 966</b><br>5,0    | <b>134 825</b><br>4,8    | <b>118 469</b><br>4,3    | <b>138 775</b><br>4,8    | <b>135 851</b><br>3,6    |
| <b>Europene/<br/><i>European films</i></b>  | <b>242 031</b><br>6,0    | <b>211 700</b><br>7,5    | <b>193 200</b><br>7,0    | <b>295 715</b><br>10,1   | <b>379 020</b><br>10,0   |
| <b>Americane/<br/><i>American films</i></b> | <b>3 539 595</b><br>88,4 | <b>2 454 360</b><br>86,7 | <b>2 448 073</b><br>88,1 | <b>2 462 678</b><br>84,1 | <b>3 255 512</b><br>85,7 |
| <b>Alte țări/<br/><i>Others</i></b>         | <b>22 757</b><br>0,6     | <b>28 678</b><br>1,0     | <b>16 774</b><br>0,6     | <b>30 882</b><br>1,0     | <b>27 203</b><br>0,7     |
| <b>Total</b>                                | <b>4 002 349</b>         | <b>2 829 563</b>         | <b>2 776 516</b>         | <b>2 928 050</b>         | <b>3 797 586</b>         |



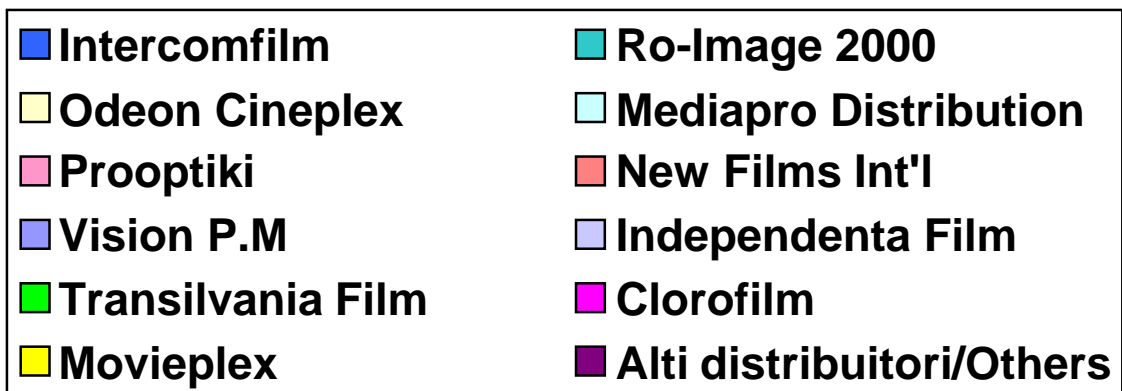
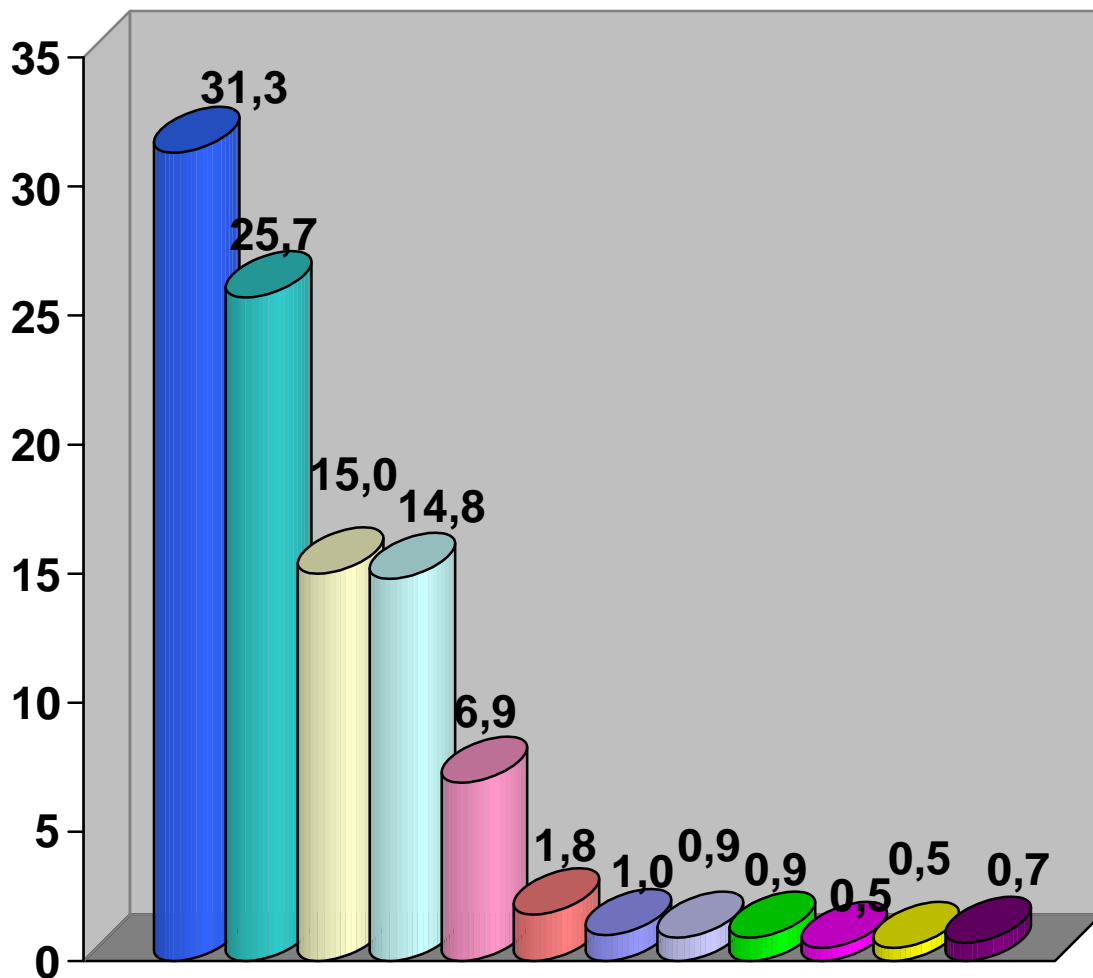


**5. Numărul spectatorilor realizat cu filmele în premieră, pe distribuitori/  
Admissions according to distribution companies of the first-time release feature films  
2004 – 2008**

| <i>Distribuitori/<br/>Distribution companies</i> | <b>2004</b><br>%  | <b>2005</b><br>%  | <b>2006</b><br>%  | <b>2007</b><br>% | <b>2008</b><br>%  |
|--|-------------------|-------------------|-------------------|------------------|-------------------|
| <b>Intercomfilm</b>                              | 1 861 786<br>52,1 | 1 093 168<br>43,9 | 1 195 342<br>47,8 | 976 296<br>36,9  | 1.114.422<br>31,3 |
| <b>Ro – Image 2000</b>                           | 569 579<br>15,9   | 523 368<br>21,0   | 422 929<br>16,9   | 702 280<br>26,5  | 914.882<br>25,7   |
| <b>Odeon Cineplex</b>                            |                   |                   |                   | 47 192<br>1,8    | 532.323<br>15,0   |
| <b>Mediapro Distribution</b>                     |                   |                   | 63 717<br>2,6     | 384 845<br>14,5  | 527.236<br>14,8   |
| <b>Prooptiki</b>                                 | 34 756<br>1,0     | 308 986<br>12,3   | 275 888<br>11,0   | 227 519<br>8,6   | 246.499<br>6,9    |
| <b>New Films Int'l</b>                           | 156 902<br>4,4    | 176 475<br>7,1    | 93 678<br>3,8     | 70 046<br>2,6    | 64.266<br>1,8     |
| <b>Independența Film</b>                         | 73 392<br>2,1     | 56 129<br>2,2     | 49 901<br>2,0     | 29 636<br>1,1    | 31.523<br>0,9     |
| <b>Vision P.M.</b>                               |                   |                   |                   |                  | 35.160<br>1,0     |
| <b>Transilvania Film</b>                         |                   | 9 823<br>0,4      | 46 435<br>1,9     | 60 626<br>2,3    | 30.963<br>0,9     |
| <b>Clorofilm</b>                                 |                   |                   |                   |                  | 18.292<br>0,5     |
| <b>Movieplex</b>                                 |                   |                   |                   |                  | 17.936<br>0,5     |
| <b>Alți distribuitori/<br/>Others</b>            | 358 884<br>10,0   | 213 419<br>8,6    | 264 213<br>10,6   | 26 970<br>0,9    | 25.531<br>0,7     |
| <b>Total</b>                                     | <b>3 576 746</b>  | <b>2 491 919</b>  | <b>2 498 907</b>  | <b>2 648 788</b> | <b>3 559 033</b>  |



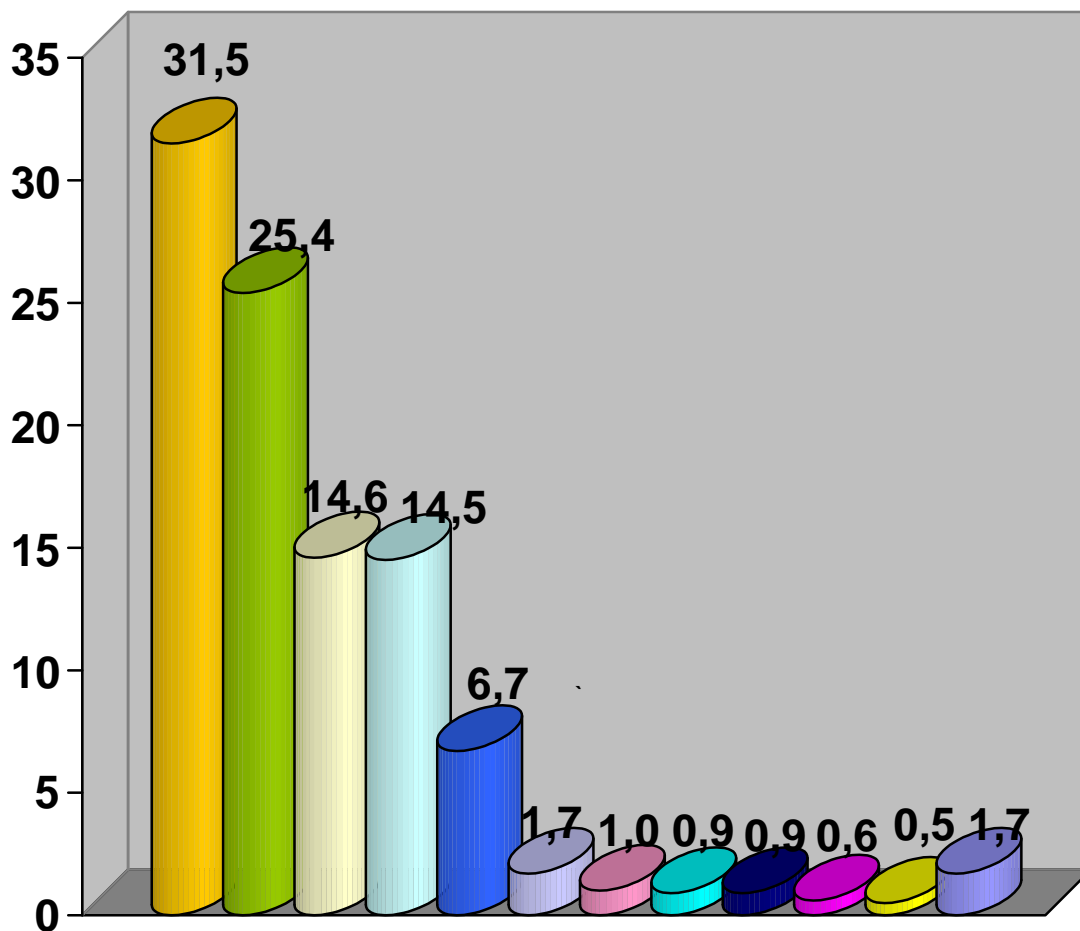
**COTA DE PIATA A PRINCIPALILOR DISTRIBUTORI CU FILME  
IN PREMIERĂ, ÎN FUNCȚIE DE SPECTATORI / MARKET SHARE  
ACCORDING TO DISTRIBUTION COMPANIES OF FIRST-TIME  
RELEASE FILMS  
ANUL/YEAR 2008**



**6. Numărul spectatorilor realizat cu totalul filmelor difuzate, pe distribuitori/  
Admissions according to distribution companies  
2004 – 2008**

| <b>Distribuitori/<br/>Distribution<br/>companies</b> | <b>2004<br/>%</b>         | <b>2005<br/>%</b>         | <b>2006<br/>%</b>         | <b>2007<br/>%</b>         | <b>2008</b>               |
|--|---------------------------|---------------------------|---------------------------|---------------------------|---------------------------|
| <b>Intercomfilm</b>                                  | <b>1 971 275<br/>49,3</b> | <b>1 213 802<br/>42,9</b> | <b>1 236 032<br/>44,5</b> | <b>1 088 269<br/>37,2</b> | <b>1 196 660<br/>31,5</b> |
| <b>Ro –Image<br/>2000</b>                            | <b>613 461<br/>15,3</b>   | <b>560 622<br/>19,8</b>   | <b>487 591<br/>17,6</b>   | <b>740 080<br/>25,3</b>   | <b>965 631<br/>25,4</b>   |
| <b>Odeon Cineplex</b>                                |                           |                           |                           | <b>47 192<br/>1,6</b>     | <b>554 366<br/>14,6</b>   |
| <b>Mediapro<br/>Distribution</b>                     |                           |                           | <b>64 357<br/>2,3</b>     | <b>412 717<br/>14,1</b>   | <b>552 548<br/>14,5</b>   |
| <b>Prooptiki</b>                                     | <b>34 756<br/>0,8</b>     | <b>317 723<br/>11,2</b>   | <b>349 685<br/>12,5</b>   | <b>271 122<br/>9,3</b>    | <b>253 515<br/>6,7</b>    |
| <b>New Films<br/>Int'l</b>                           | <b>190 384<br/>4,8</b>    | <b>178 479<br/>6,3</b>    | <b>99 758<br/>3,6</b>     | <b>80 441<br/>2,8</b>     | <b>64 679<br/>1,7</b>     |
| <b>Independenta<br/>Film</b>                         | <b>110 430<br/>2,7</b>    | <b>68 816<br/>2,4</b>     | <b>59 370<br/>2,1</b>     | <b>38 149<br/>1,3</b>     | <b>37 543<br/>1,0</b>     |
| <b>Vision P.M.</b>                                   |                           |                           |                           |                           | <b>35 893<br/>0,9</b>     |
| <b>Transilvania Film</b>                             |                           | <b>9 823<br/>0,4</b>      | <b>46 797<br/>1,7</b>     | <b>67 097<br/>2,3</b>     | <b>35 141<br/>0,9</b>     |
| <b>Clorofilm</b>                                     |                           |                           |                           |                           | <b>20 555<br/>0,6</b>     |
| <b>Movieplex</b>                                     |                           |                           |                           |                           | <b>17 936<br/>0,5</b>     |
| <b>Alti distribuitori/<br/>Others</b>                | <b>512 856<br/>12,9</b>   | <b>345 888<br/>12,2</b>   | <b>337 441<br/>12,1</b>   | <b>51 446<br/>1,7</b>     | <b>63 119<br/>1,7</b>     |
| <b>TOTAL</b>   | <b>4 002 349</b>          | <b>2 829 563</b>          | <b>2 776 516</b>          | <b>2 928 050</b>          | <b>3 797 586</b>          |

**COTA DE PIAȚĂ A PRINCIPALILOR DISTRIBUITORI /  
MARKET SHARE OF MAJOR DISTRIBUTION COMPANIES  
ANUL / YEAR 2008**



|                   |                       |
|-------------------|-----------------------|
| Intercomfilm      | Ro-Image 2000         |
| Odeon Cineplex    | Mediapro Distribution |
| Prooptiki         | New Films Int'l       |
| Independenta Film | Transilvania Film     |
| Vision P.M.       | Clorofilm             |
| Movieplex         | Alti Distr./Others    |

**7. Primele 20 de cinematografe cu un ecran, după numărul  
spectatorilor realizat/ The top 20 cinemas by admissions  
ANUL / YEAR 2008**

| <b>Nr.<br/>Crt.</b> | <b>Cinematograf/<br/>Cinema</b> | <b>Localitatea/<br/>Town</b> | <b>Număr<br/>Locuri/<br/>Number of<br/>seats</b> | <b>Număr<br/>Spectatori/<br/>Admissions</b> |
|---------------------|---------------------------------|------------------------------|--|---|
| <b>1</b>            | <b>CINEMA PRO</b>               | <b>BUCUREȘTI</b>             | <b>541</b>                                       | <b>167 512</b>                              |
| <b>2</b>            | <b>REPUBLICA</b>                | <b>CLUJ NAPOCA</b>           | <b>960</b>                                       | <b>135 084</b>                              |
| <b>3</b>            | <b>STUDIO</b>                   | <b>BUCUREȘTI</b>             | <b>380</b>                                       | <b>57 060</b>                               |
| <b>4</b>            | <b>VICTORIA</b>                 | <b>CLUJ NAPOCA</b>           | <b>301</b>                                       | <b>45 762</b>                               |
| <b>5</b>            | <b>PATRIA</b>                   | <b>CRAIOVA</b>               | <b>708</b>                                       | <b>38 716</b>                               |
| <b>6</b>            | <b>PATRIA</b>                   | <b>BUCUREȘTI</b>             | <b>1014</b>                                      | <b>36 314</b>                               |
| <b>7</b>            | <b>ARTA</b>                     | <b>SIBIU</b>                 | <b>237</b>                                       | <b>32 281</b>                               |
| <b>8</b>            | <b>ARTA</b>                     | <b>CLUJ NAPOCA</b>           | <b>255</b>                                       | <b>31 522</b>                               |
| <b>9</b>            | <b>ARTA</b>                     | <b>TG. MUREȘ</b>             | <b>618</b>                                       | <b>29 478</b>                               |
| <b>10</b>           | <b>LIBERTATEA</b>               | <b>ORADEA</b>                | <b>112</b>                                       | <b>14 862</b>                               |
| <b>11</b>           | <b>GLENDALE<br/>STUDIO</b>      | <b>BUCUREȘTI</b>             | <b>170</b>                                       | <b>13 678</b>                               |
| <b>12</b>           | <b>SCALA</b>                    | <b>BUCUREȘTI</b>             | <b>860</b>                                       | <b>13 003</b>                               |
| <b>13</b>           | <b>CORSO</b>                    | <b>BUCUREȘTI</b>             | <b>273</b>                                       | <b>12 968</b>                               |
| <b>14</b>           | <b>REPUBLICA</b>                | <b>IAȘI</b>                  | <b>858</b>                                       | <b>12 463</b>                               |
| <b>15</b>           | <b>DACIA</b>                    | <b>ARAD</b>                  | <b>741</b>                                       | <b>11 037</b>                               |
| <b>16</b>           | <b>CENTRAL</b>                  | <b>BRAILA</b>                | <b>352</b>                                       | <b>10 374</b>                               |
| <b>17</b>           | <b>VICTORIA</b>                 | <b>IAȘI</b>                  | <b>902</b>                                       | <b>9 865</b>                                |
| <b>18</b>           | <b>ARTA</b>                     | <b>DEJ</b>                   | <b>424</b>                                       | <b>9 125</b>                                |
| <b>19</b>           | <b>MODERN</b>                   | <b>PITESTI</b>               | <b>286</b>                                       | <b>9 054</b>                                |
| <b>20</b>           | <b>EUROPA</b>                   | <b>BUCUREȘTI</b>             | <b>329</b>                                       | <b>7 162</b>                                |

**8. Cinematografe multiecran si multiplexuri in  
functiune/ *Multiscreens and multiplexes - 2008***

| <i>Cinematograf/<br/>Cinema</i> | <i>Localitate/<br/>Town</i> | <i>Ecrane/<br/>Screens</i> | <i>Locuri/<br/>Seats</i> | <i>Spectatori/<br/>Admissions</i> |
|---------------------------------|-----------------------------|----------------------------|--------------------------|-----------------------------------|
| MODERN                          | Brasov                      | 2                          | 180                      | 4 574                             |
| DACIA                           | Bistrița                    | 2                          | 590                      | 5 958                             |
| PLAZA CINEMA                    | Tulcea                      | 2                          | 246                      | 3483                              |
| GO MULTIPLEX                    | Brasov                      | 3                          | 243                      | 30 327                            |
| GLENDALE IASI                   | Iasi                        | 3                          | 500                      | 14 452                            |
| CITYPLEX TOMIS                  | Constanta                   | 4                          | 670                      | 130 809                           |
| CITYPLEX BUCURESTI              | Bucuresti                   | 4                          | 556                      | 103 407                           |
| HOLLYWOOD MULTIPLEX             | Oradea                      | 5                          | 675                      | 174 500                           |
| CINEMA CITY                     | Iasi                        | 5                          | 864                      | 168 361                           |
| CINEMA CITY                     | Timisoara                   | 7                          | 951                      | 321 435                           |
| LIGHT CINEMA                    | Bucuresti                   | 7                          | 1 158                    | 47 389                            |
| CINEMA CITY                     | Cluj Napoca                 | 10                         | 1 670                    | 107 211                           |
| HOLLYWOOD MULTIPLEX             | Bucuresti                   | 10                         | 2 125                    | 985 807                           |
| MOVIEPLEX CINEMA                | Bucuresti                   | 11                         | 2 537                    | 887 469                           |

**Movieplex Bucuresti Mall**

| <i>Sali cinematograf/<br/>Screens</i> | <i>Numar locuri/<br/>Number of seats</i> | <i>Numar spectatori/<br/>Admissions</i> |
|---------------------------------------|--|---|
| 1                                     | 186                                      | 74 132                                  |
| 2                                     | 176                                      | 74 030                                  |
| 3                                     | 186                                      | 63 750                                  |
| 4                                     | 44                                       | 1 950                                   |
| 5                                     | 88                                       | 40 256                                  |
| 6                                     | 347                                      | 100 425                                 |
| 7                                     | 199                                      | 76 468                                  |
| 8                                     | 507                                      | 204 516                                 |
| 9                                     | 214                                      | 70 159                                  |
| 10                                    | 243                                      | 86 758                                  |
| 11                                    | 347                                      | 95 025                                  |
| <b>Total</b>                          | <b>2537</b>                              | <b>887 469</b>                          |

## Hollywood Multiplex Bucuresti Mall

| <i>Sali cinematograf/<br/>Screens</i> | <i>Numar locuri/<br/>Number of seats</i> | <i>Numar spectatori/<br/>Admissions</i> |
|---------------------------------------|--|---|
| <b>1</b>                              | <b>270</b>                               | <b>114 424</b>                          |
| <b>2</b>                              | <b>131</b>                               | <b>55 707</b>                           |
| <b>3</b>                              | <b>397</b>                               | <b>191 968</b>                          |
| <b>4</b>                              | <b>131</b>                               | <b>50 352</b>                           |
| <b>5</b>                              | <b>270</b>                               | <b>116 113</b>                          |
| <b>6</b>                              | <b>155</b>                               | <b>80 675</b>                           |
| <b>7</b>                              | <b>155</b>                               | <b>77 325</b>                           |
| <b>8</b>                              | <b>306</b>                               | <b>146 463</b>                          |
| <b>9</b>                              | <b>155</b>                               | <b>77 413</b>                           |
| <b>10</b>                             | <b>155</b>                               | <b>75 367</b>                           |
| <b>Total</b>                          | <b>2125</b>                              | <b>985 807</b>                          |

## Cinema City Cluj-Napoca

| <i>Sali cinematograf/<br/>Screens</i> | <i>Numar locuri/<br/>Number of seats</i> | <i>Numar spectatori/<br/>Admissions</i> |
|---------------------------------------|--|---|
| <b>1</b>                              | <b>174</b>                               | <b>7 831</b>                            |
| <b>2</b>                              | <b>174</b>                               | <b>10 340</b>                           |
| <b>3</b>                              | <b>174</b>                               | <b>7 946</b>                            |
| <b>4</b>                              | <b>174</b>                               | <b>8 040</b>                            |
| <b>5</b>                              | <b>66</b>                                | <b>7 210</b>                            |
| <b>6</b>                              | <b>207</b>                               | <b>12 466</b>                           |
| <b>7</b>                              | <b>217</b>                               | <b>16 935</b>                           |
| <b>8</b>                              | <b>218</b>                               | <b>21 012</b>                           |
| <b>9</b>                              | <b>200</b>                               | <b>8 973</b>                            |
| <b>10</b>                             | <b>66</b>                                | <b>6 458</b>                            |
| <b>Total</b>                          | <b>1670</b>                              | <b>107 211</b>                          |

## Cinema City Timisoara

| <i>Sali cinematograf/<br/>Screens</i> | <i>Numar locuri/<br/>Number of seats</i> | <i>Numar spectatori/<br/>Admissions</i> |
|---------------------------------------|--|---|
| <b>1</b>                              | <b>215</b>                               | <b>59 835</b>                           |
| <b>2</b>                              | <b>112</b>                               | <b>36 865</b>                           |
| <b>3</b>                              | <b>112</b>                               | <b>38 576</b>                           |
| <b>4</b>                              | <b>112</b>                               | <b>39 212</b>                           |
| <b>5</b>                              | <b>317</b>                               | <b>101 883</b>                          |
| <b>6</b>                              | <b>41</b>                                | <b>23 627</b>                           |
| <b>7</b>                              | <b>42</b>                                | <b>21 437</b>                           |
| <b>Total</b>                          | <b>951</b>                               | <b>321 435</b>                          |

## Light Cinema Bucuresti

| <i>Sali cinematograf/<br/>Screens</i> | <i>Numar locuri/<br/>Number of seats</i> | <i>Numar spectatori/<br/>Admissions</i> |
|---------------------------------------|--|---|
| <b>1</b>                              | <b>293</b>                               | <b>12 474</b>                           |
| <b>2</b>                              | <b>415</b>                               | <b>7 806</b>                            |
| <b>3</b>                              | <b>91</b>                                | <b>5 667</b>                            |
| <b>4</b>                              | <b>77</b>                                | <b>3 123</b>                            |
| <b>5</b>                              | <b>77</b>                                | <b>4 034</b>                            |
| <b>6</b>                              | <b>95</b>                                | <b>3 961</b>                            |
| <b>7</b>                              | <b>110</b>                               | <b>10 324</b>                           |
| <b>Total</b>                          | <b>1158</b>                              | <b>47 389</b>                           |

## Cinema City Iasi

| <i>Sali cinematograf/<br/>Screens</i> | <i>Numar locuri/<br/>Number of seats</i> | <i>Numar spectatori/<br/>Admissions</i> |
|---------------------------------------|--|---|
| <b>1</b>                              | <b>245</b>                               | <b>50 664</b>                           |
| <b>2</b>                              | <b>244</b>                               | <b>46 623</b>                           |
| <b>3</b>                              | <b>187</b>                               | <b>28 537</b>                           |
| <b>4</b>                              | <b>94</b>                                | <b>21308</b>                            |
| <b>5</b>                              | <b>94</b>                                | <b>21 229</b>                           |
| <b>Total</b>                          | <b>864</b>                               | <b>168 361</b>                          |

## Lotus Oradea

| <i>Sali cinematograf/<br/>Screens</i> | <i>Numar locuri/<br/>Number of seats</i> | <i>Numar spectatori/<br/>Admissions</i> |
|---------------------------------------|--|---|
| <b>1</b>                              | <b>138</b>                               | <b>29 883</b>                           |
| <b>2</b>                              | <b>223</b>                               | <b>62 964</b>                           |
| <b>3</b>                              | <b>168</b>                               | <b>40 996</b>                           |
| <b>4</b>                              | <b>73</b>                                | <b>20 081</b>                           |
| <b>5</b>                              | <b>73</b>                                | <b>20 576</b>                           |
| <b>Total</b>                          | <b>675</b>                               | <b>174 500</b>                          |

## Cityplex Mall Bucuresti

| <i>Sali cinematograf/<br/>Screens</i> | <i>Numar locuri/<br/>Number of seats</i> | <i>Numar spectatori/<br/>Admissions</i> |
|---------------------------------------|--|---|
| <b>1</b>                              | <b>139</b>                               | <b>33 538</b>                           |
| <b>2</b>                              | <b>139</b>                               | <b>24 282</b>                           |
| <b>3</b>                              | <b>139</b>                               | <b>23 593</b>                           |
| <b>4</b>                              | <b>139</b>                               | <b>21 994</b>                           |
| <b>TOTAL</b>                          | <b>556</b>                               | <b>103 407</b>                          |

### Cityplex Tomis Constanța

| <i>Sali cinematograf/<br/>Screens</i> | <i>Numar locuri/<br/>Number of seats</i> | <i>Numar spectatori/<br/>Admissions</i> |
|---------------------------------------|--|---|
| <b>1</b>                              | <b>137</b>                               | <b>26 677</b>                           |
| <b>2</b>                              | <b>198</b>                               | <b>39 860</b>                           |
| <b>3</b>                              | <b>198</b>                               | <b>36 160</b>                           |
| <b>4</b>                              | <b>137</b>                               | <b>28 112</b>                           |
| <b>TOTAL</b>                          | <b>670</b>                               | <b>130 809</b>                          |

### Go Multiplex Brasov

| <i>Sali cinematograf/<br/>Screens</i> | <i>Numar locuri/<br/>Number of seats</i> | <i>Numar spectatori/<br/>Admissions</i> |
|---------------------------------------|--|---|
| <b>1</b>                              | <b>81</b>                                | <b>12 117</b>                           |
| <b>2</b>                              | <b>81</b>                                | <b>10 328</b>                           |
| <b>3</b>                              | <b>81</b>                                | <b>7 882</b>                            |
| <b>Total</b>                          | <b>243</b>                               | <b>30 327</b>                           |

### Glendale Iasi

| <i>Sali cinematograf/<br/>Screens</i> | <i>Numar locuri/<br/>Number of seats</i> | <i>Numar spectatori/<br/>Admissions</i> |
|---------------------------------------|--|---|
| <b>1</b>                              | <b>192</b>                               | <b>5 028</b>                            |
| <b>2</b>                              | <b>154</b>                               | <b>3 838</b>                            |
| <b>3</b>                              | <b>154</b>                               | <b>5 586</b>                            |
| <b>Total</b>                          | <b>500</b>                               | <b>14 452</b>                           |

**9. PRINCIPALELE CINEMATOGRAFE CARE BENEFICIAZA DE  
SPRIJIN "EURIMAGE", INTEGRATE IN RETEAUA  
"EUROPA CINEMA"/ 2008**

**MAIN CINEMA THEATRES HAVING THE SUPPORT OF THE  
"EURIMAGES FUND" OF THE COUNCIL OF EUROPE AND  
"EUROPA CINEMA"**

| <b><i>Cinematograf//cinema<br/>localitate/town<br/>nr.locuri/number of seats</i></b> | <b><i>Spectacole/<br/>Screenings<br/>2008</i></b> | <b><i>Spectatori/<br/>Admissions<br/>2008</i></b> |
|--|---|---|
| <b><i>STUDIO – București<br/>(380 locuri/seats)</i></b>                              | <b>1 829</b>                                      | <b>57 060</b>                                     |
| <b><i>VICTORIA - Cluj-Napoca<br/>( 301 locuri/seats)</i></b>                         | <b>1 216</b>                                      | <b>45 762</b>                                     |
| <b><i>ARTA- Cluj Napoca<br/>( 255 locuri /seats)</i></b>                             | <b>1 236</b>                                      | <b>31 522</b>                                     |
| <b><i>STUDIO –Constanța<br/>( 180 locuri /seats)</i></b>                             | <b>303</b>  | <b>4 375</b>                                      |
| <b><i>LIBERTATEA - Oradea<br/>(112 locuri/seats)</i></b>                             | <b>852</b>  | <b>14 862</b>                                     |
| <b><i>EUROPA-București<br/>(329 locuri/seats)</i></b>                                | <b>978</b>  | <b>7 162</b>                                      |
| <b><i>MODERN – Craiova<br/>(175 locuri/seats)</i></b>                                | <b>734</b>  | <b>3 678</b>                                      |

**Primele 20 de filme în funcție de numărul de spectatori /**  
**The top 20 released feature films by admissions**  
**ANUL / YEAR 2008**

| <b>Nr. Crt.</b> | <b>Titlul filmului/<br/>Title</b>   | <b>Spectatori/<br/>Admissions</b> | <b>Distribuitor/<br/>Film companies</b> | <b>Data premierei/<br/>Date of release</b> |
|-----------------|---|-----------------------------------|---|--|
| 1               | <b>CALATORIE SPRE CENTRUL PAMANTULUI<br/>JOURNEY TO THE CENTER OF THE EARTH</b>                         | <b>116.145</b>                    | <b>INTERCOMFILM</b>                     | <b>05.09.2008</b>                          |
| 2               | <b>HANCOCK<br/>HANCOCK</b>  | <b>90.704</b>                     | <b>INTERCOMFILM</b>                     | <b>04.07.2008</b>                          |
| 3               | <b>CAVALERUL NEGRU<br/>THE DARK KNIGHT</b>  | <b>81.993</b>                     | <b>INTERCOMFILM</b>                     | <b>25.07.2008</b>                          |
| 4               | <b>DOI BURLACI SI-O BLONDA<br/>MY BEST FRIEND'GIRL</b>  | <b>80.187</b>                     | <b>MEDIAPRO<br/>DISTRIBUTION</b>        | <b>26.09.2008</b>                          |
| 5               | <b>PARTEA LUI DE CONSOLARE<br/>QUANTUM OF SOLACE</b>  | <b>79.647</b>                     | <b>INTERCOMFILM</b>                     | <b>07.11.2008</b>                          |
| 6               | <b>MADAGASCAR 2<br/>MADAGASCAR:ESCAPE 2 AFRICA</b>  | <b>79.071</b>                     | <b>RO-IMAGE 2000</b>                    | <b>28.11.2008</b>                          |
| 7               | <b>TOTUL DESPRE SEX<br/>SEX AND THE CITY</b>  | <b>77.933</b>                     | <b>INTERCOMFILM</b>                     | <b>06.06.2008</b>                          |
| 8               | <b>10 000 I.CHR<br/>10 000 B.C.</b>   | <b>72.964</b>                     | <b>INTERCOMFILM</b>                     | <b>14.03.2008</b>                          |
| 9               | <b>MUMIA:MORMANTUL IMPARATULUI DRAGON<br/>THE MUMMY:TOMB OF THE DRAGON EMPEROR</b>                      | <b>71.775</b>                     | <b>RO-IMAGE 2000</b>                    | <b>08.08.2008</b>                          |
| 10              | <b>WANTED<br/>WANTED</b>  | <b>68.807</b>                     | <b>RO-IMAGE 2000</b>                    | <b>27.06.2008</b>                          |
| 11              | <b>INDIANA JONES SI REGATUL CRANIULUI DE CRISTAL<br/>INDIANA JONES AND KINGDOM OF THE CRYSTAL SKULL</b> | <b>63.518</b>                     | <b>RO-IMAGE 2000</b>                    | <b>23.05.2008</b>                          |

| <b>Nr.<br/>Crt.</b> | <b><i>Titlul filmului/<br/>Title</i></b>  | <b><i>Spectatori/<br/>Admissions</i></b> | <b><i>Distribuitor/<br/>Film companies</i></b> | <b><i>Data premierei/<br/>Date of release</i></b> |
|---------------------|---|--|--|---|
| <b>12</b>           | <b>KUNG FU PANDA<br/>KUNG FU PANDA</b>  | <b>55.327</b>                            | <b>RO-IMAGE 2000</b>                           | <b>04.07.2008</b>                                 |
| <b>13</b>           | <b>MARIAJ DE VEGAS<br/>WHAT HAPPENS IN VEGAS</b>                                  | <b>52.976</b>                            | <b>ODEON CINEPLEX</b>                          | <b>30.05.2008</b>                                 |
| <b>14</b>           | <b>UN GHEM DE MINCIUNI<br/>BODY OF LIES</b>                                       | <b>48.759</b>                            | <b>INTERCOMFILM</b>                            | <b>28.11.2008</b>                                 |
| <b>15</b>           | <b>COMOARA NANIONALA 2:CARTEA SECRETELOR<br/>NATIONAL TREASURE:BOOK OF SECRET</b> | <b>47.345</b>                            | <b>PROOPTIKI<br/>ROMANIA</b>                   | <b>04.01.2008</b>                                 |
| <b>16</b>           | <b>NU TE PUNE CU ZOHAN<br/>YOU DON'T MESS WITH THE ZOHAN</b>                      | <b>46.560</b>                            | <b>INTERCOMFILM</b>                            | <b>01.08.2008</b>                                 |
| <b>17</b>           | <b>ZIUA IN CARE PAMANTUL SE OPRI<br/>THE DAY EARTH STOOD STILL</b>                | <b>46.499</b>                            | <b>ODEON CINEPLEX</b>                          | <b>12.12.2008</b>                                 |
| <b>18</b>           | <b>MAMMA MIA FILMUL<br/>MAMMA MIA</b>   | <b>45.873</b>                            | <b>RO-IMAGE 2000</b>                           | <b>05.09.2008</b>                                 |
| <b>19</b>           | <b>OMUL DE OTEL<br/>IRON MAN</b>  | <b>44.877</b>                            | <b>RO-IMAGE 2000</b>                           | <b>02.05.2008</b>                                 |
| <b>20</b>           | <b>CRIME JUSTIFICATE<br/>RIGHTEOUS KILL</b>                                       | <b>44.322</b>                            | <b>ODEON CINEPLEX</b>                          | <b>19.09.2008</b>                                 |

**11.Primele 10 filme europene în funcție de numărul de spectatori realizat în anul 2008**  
**The top 10 European films by admissions in 2008**

| <b>Nr. Crt.</b> | <b>Titlul filmului/<br/>Original title</b>  | <b>Spectatori/<br/>Admissions</b> | <b>Distribuitori/<br/>Distribution companies</b> | <b>Data premierei/<br/>Date of release</b> |
|-----------------|---|-----------------------------------|--|--|
| <b>1</b>        | <b>LEGENDA VIE<br/>I AM LEGEND</b>  | <b>41.421</b>                     | <b>INTERCOMFILM</b>                              | <b>18.01.2008</b>                          |
| <b>2</b>        | <b>ASTERIX LA JOCURILE OLIMPICE<br/>ASTERIX AT THE OLYMPIC GAMES</b>  | <b>40.529</b>                     | <b>RO IMAGE 2000</b>                             | <b>01.02.2008</b>                          |
| <b>3</b>        | <b>DUCESA<br/>THE DUCHESS</b>   | <b>39.117</b>                     | <b>MEDIAPRO DISTRIBUTION</b>                     | <b>31.10.2008</b>                          |
| <b>4</b>        | <b>JAFUL DE PE BAKER STREET<br/>THE BANK JOB</b>  | <b>36.720</b>                     | <b>MEDIAPRO DISTRIBUTION</b>                     | <b>28.03.2008</b>                          |
| <b>5</b>        | <b>CRONICILE DIN NARNIA:PRINTUL CASPIAN<br/>THE CHRONICLES OF NARNIA:PRINCE<br/>CASPIAN</b>   | <b>35.801</b>                     | <b>PROOPTIKI</b>                                 | <b>20.06.2008</b>                          |
| <b>6</b>        | <b>CUM SA RAMAI FARA PRIETENI<br/>HOW TO LOSE FRIENDS &amp;ALIENATE PEOPLE</b>  | <b>28.326</b>                     | <b>MEDIAPRO DISTRIBUTION</b>                     | <b>14.11.2008</b>                          |
| <b>7</b>        | <b>TEROARE IN PARIS<br/>TAKEN</b>   | <b>23.187</b>                     | <b>MEDIAPRO DISTRIBUTION</b>                     | <b>16.05.2008</b>                          |
| <b>8</b>        | <b>TENTATIA CASH-ULUI<br/>CASH</b>  | <b>9.688</b>                      | <b>ODEON CINEPLEX</b>                            | <b>05.09.2008</b>                          |
| <b>9</b>        | <b>ASASINAREA LUI JESSE JAMES DE CATRE<br/>LASUL ROBERT FORD<br/>THE ASSASSINATION OF JESSE JAMES BY<br/>THE COWART ROBERT FORD</b> | <b>8.794</b>                      | <b>INTERCOMFILM</b>                              | <b>28.12.2007</b>                          |
| <b>10</b>       | <b>TRIUNGHIUL DRAGOSTEI<br/>THE EDGE OF LOVE</b>  | <b>8.341</b>                      | <b>RO IMAGE 2000</b>                             | <b>21.11.2008</b>                          |

**12. Primele 20 filme românești ieșite în premieră în perioada 1997-2008 ,în funcție de numărul de spectatori realizat de la data premierei până la 31.12.2008**  
**Top 20 of first-time released national films between 1997-2008 by admissions**

| <b>Nr.<br/>Crt.</b> | <b>Titlul filmului/<br/>Original title</b> | <b>Producători/<br/>Film Companies</b>  | <b>Regia/<br/>Directed by</b> | <b>Spectatori/<br/>Admissions</b> | <b>Anul<br/>preierei/<br/>Date of<br/>release</b> |
|---------------------|--|---|-------------------------------|-----------------------------------|---|
| <b>1.</b>           | <b>GARCEA ȘI OLTENII</b>                   | MEDIA PRO PICTURES  | SAM IRVIN                     | <b>289.830</b>                    | <b>2002</b>                                       |
| <b>2.</b>           | <b>ASFALT TANGO</b>                        | DOMINO FILM/ FRANCE 3<br>CINEMA/ LE FILM DE L'QUEST/<br>STUDIOUL CINEMATOGRAFIC<br>BUC.SABINA PRODUCT   | NAE CARANFIL                  | <b>126.897</b>                    | <b>1997</b>                                       |
| <b>3.</b>           | <b>FILANTROPICA</b>                        | MEDIA PRO PICTURES, DOMINO<br>FILM,<br>MACT PRODUCTIONS FRANȚA<br><b>REALIZAT CU SPRIJIN<br/>EURIMAGES ȘI C.N.C./<br/>EURIMAGES AND C.N.C.<br/>FINANCIAL SUPORT</b> | NAE CARANFIL                  | <b>113.302</b>                    | <b>2002</b>                                       |
| <b>4.</b>           | <b>4 LUNI, 3 SAPTAMANI<br/>SI 2 ZILE</b>   | MOBRA FILM / CNC /<br>SAGA FILM   | CRISTIAN<br>MUNGIU            | <b>89.339</b>                     | <b>2007</b>                                       |

|            |                                       |  |                               |               |             |
|------------|---------------------------------------|--|-------------------------------|---------------|-------------|
| <b>5.</b>  | <b>FURIA</b>                          | IMAGINATOR   | RADU MUNTEAN                  | <b>61.356</b> | <b>2002</b> |
| <b>6.</b>  | <b>OCCIDENT</b>                       | TEMPLE FILM/<br>C N C  | CRISTIAN<br>MUNGIU            | <b>53.225</b> | <b>2002</b> |
| <b>7.</b>  | <b>ORIENT EXPRESS</b>                 | RO DE FILM   | SERGIU<br>NICOLAESCU          | <b>51.719</b> | <b>2004</b> |
| <b>8.</b>  | <b>OMUL ZILEI</b>                     | SOLARIS FILM/<br>CNC   | DAN PITA                      | <b>45.265</b> | <b>1997</b> |
| <b>9.</b>  | <b>VERIGA SALBATICA</b>               | VISION P.M./<br>CINEX INTERNATIONAL/<br>AMERICAN CINEMA<br>INTERNATIONAL | ION IONESCU                   | <b>35.160</b> | <b>2008</b> |
| <b>10.</b> | <b>TRIUNGHIIUL MORTII</b>             | RO FILM  | SERGIU<br>NICOLAESCU          | <b>34.370</b> | <b>1999</b> |
| <b>11.</b> | <b>MOARTEA DOMNULUI<br/>LĂZĂRESCU</b> | MANDRAGORA   | CRISTI PUIU                   | <b>28.793</b> | <b>2005</b> |
| <b>12.</b> | <b>SUPRAVIETUITORUL</b>               | MEDIAPRO PICTURES  | SERGIU<br>NICOLAESCU          | <b>26.575</b> | <b>2008</b> |
| <b>13.</b> | <b>VLAD NEMURITORUL</b>               | ARTIS FILM   | ADRIAN<br>POPOVICI<br>(debut) | <b>24.499</b> | <b>2002</b> |
| <b>14.</b> | <b>RESTUL E TACERE</b>                | DOMINO FILM  | NAE CARANFIL                  | <b>22.670</b> | <b>2008</b> |

|            |   |   |                          |                |             |
|------------|---|---|--------------------------|----------------|-------------|
| <b>15.</b> | <b>CALIFORNIA<br/>DREAMIN'</b>                    | MEDIAPRO PICTURES   | CRISTIAN<br>NEMESCU      | <b>21.162</b>  | <b>2007</b> |
| <b>16.</b> | <b>LEGATURI<br/>BOLNAVICIOASE</b>                 | LIBRA FILM  | TUDOR GIURGIU<br>(debut) | <b>20.777</b>  | <b>2006</b> |
| <b>17.</b> | <b>BOOGIE</b>                                     | MULTIMEDIA EST  | RADU MUNTEAN             | <b>18.207</b>  | <b>2008</b> |
| <b>18.</b> | <b>TERMINUS PARADIS</b>                           | CANAL +/- FILMEX/STUDIOUL DE<br>CREATIE-MCC/M K 2<br>PRODUCTION | LUCIAN<br>PINTILIE       | <b>18.149</b>  | <b>1998</b> |
| <b>19.</b> | <b>CUM MI-AM<br/>PETRECUT SFARSITUL<br/>LUMII</b> | STRADA FILM /<br>REVERSE ANGLE<br>INTERNATIONAL                 | CATALIN<br>MITULESCU     | <b>15. 694</b> | <b>2006</b> |
| <b>20.</b> | <b>TREI FRATI DE BELEA</b>                        | MEDIAPRO PICTURES   | HALACU NICON<br>TEODOR   | <b>15. 650</b> | <b>2006</b> |